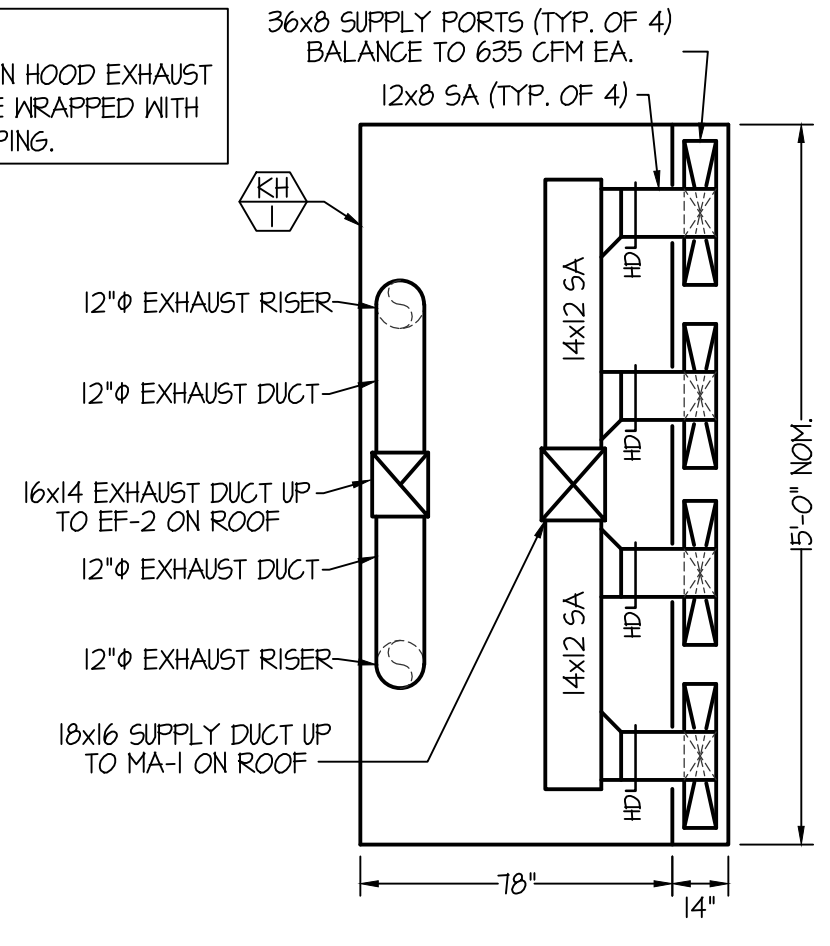
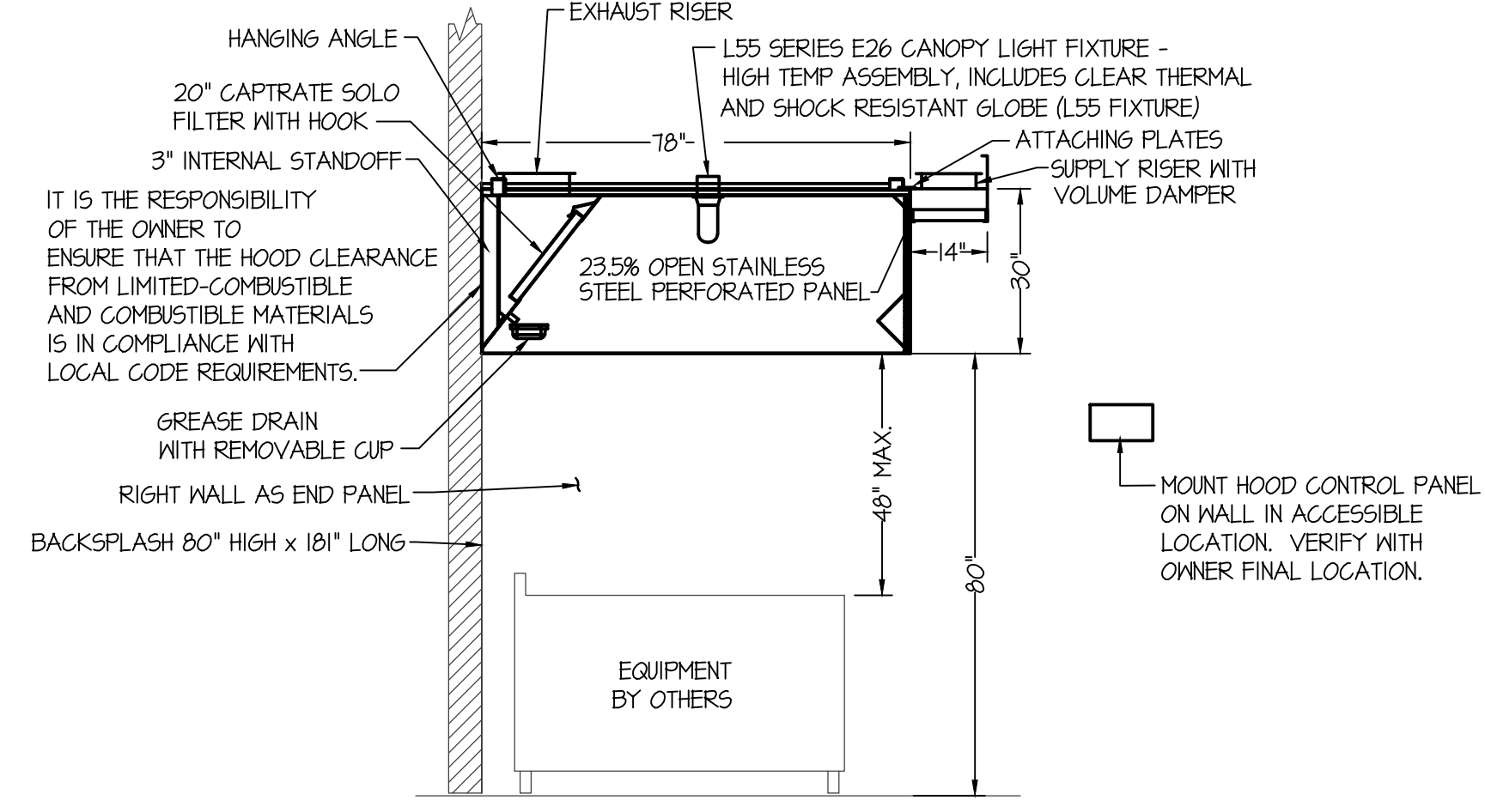




NOTE:
ALL KITCHEN HOOD EXHAUST DUCT TO BE WRAPPED WITH FIRE WRAPPING.



PLAN VIEW



SECTION VIEW

KITCHEN HOOD DETAILS
NO SCALE

SYM.	CFM	OUTSIDE AIR REQUIRED	SP E	BLOWER HP.	CHAR	MCA	WEIGHT	GAS CONN	HEATING			COOLING			REMARKS	
									BTU IN	BTU OUT	EAT	LAT	MBH	EAT		WB
RT 1	6000	600	0.1"	2.5	480/60/3	36.0	1806#	3/4"	240,000	156,000	65°F	104°F	15.0	80°F	62°F	CARRIER MODEL 48TCED16B2M6-6B0J0 WITH FACTORY ROOF CURB AND ECONOMIZER.
RT 2	6000	600	0.1"	2.5	480/60/3	36.0	1806#	3/4"	240,000	156,000	65°F	104°F	15.0	80°F	62°F	CARRIER MODEL 48TCED16B2M6-6B0J0 WITH FACTORY ROOF CURB AND ECONOMIZER.
RT 3	1650	160	0.1"	1.0	480/60/3	11.0	724#	3/4"	110,000	70,400	65°F	104°F	4.0	80°F	62°F	CARRIER MODEL 48FCEA05A2M6-6B0G0 WITH FACTORY ROOF CURB AND ECONOMIZER.
RT 4	4000	400	0.1"	2.0	480/60/3	24.0	1244#	3/4"	224,000	141,200	65°F	104°F	10.0	80°F	62°F	CARRIER MODEL 48TCED12B2M6-6B0J0 WITH FACTORY ROOF CURB AND ECONOMIZER.
RT 5	8000	800	0.1"	3.5	480/60/3	50.2	2824#	3/4"	310,000	200,000	65°F	104°F	22.0	80°F	62°F	CARRIER MODEL 48TCED24B2M6-6B0J0 WITH FACTORY ROOF CURB AND ECONOMIZER.
RT 6	6000	600	0.1"	2.5	480/60/3	36.0	1806#	3/4"	240,000	156,000	65°F	104°F	15.0	80°F	62°F	CARRIER MODEL 48TCED16B2M6-6B0J0 WITH FACTORY ROOF CURB AND ECONOMIZER.
RT 7	6000	600	0.1"	2.5	480/60/3	36.0	1806#	3/4"	240,000	156,000	65°F	104°F	15.0	80°F	62°F	CARRIER MODEL 48TCED16B2M6-6B0J0 WITH FACTORY ROOF CURB AND ECONOMIZER.
RT 8	6000	600	0.1"	2.5	480/60/3	36.0	1806#	3/4"	240,000	156,000	65°F	104°F	15.0	80°F	62°F	CARRIER MODEL 48TCED16B2M6-6B0J0 WITH FACTORY ROOF CURB AND ECONOMIZER.
RT 9	6000	600	0.1"	2.5	480/60/3	36.0	1806#	3/4"	240,000	156,000	65°F	104°F	15.0	80°F	62°F	CARRIER MODEL 48TCED16B2M6-6B0J0 WITH FACTORY ROOF CURB AND ECONOMIZER.
RT 10	3000	300	0.1"	2.0	480/60/3	20.0	1141#	3/4"	180,000	118,400	65°F	104°F	7.0	80°F	62°F	CARRIER MODEL 48TCED08B2M6-6B0J0 WITH FACTORY ROOF CURB AND ECONOMIZER.
RT 11	8000	800	0.1"	3.5	480/60/3	50.2	2824#	3/4"	310,000	200,000	65°F	104°F	22.0	80°F	62°F	CARRIER MODEL 48TCED24B2M6-6B0J0 WITH FACTORY ROOF CURB AND ECONOMIZER.
RT 12	6000	600	0.1"	2.5	480/60/3	36.0	1806#	3/4"	240,000	156,000	65°F	104°F	15.0	80°F	62°F	CARRIER MODEL 48TCED16B2M6-6B0J0 WITH FACTORY ROOF CURB AND ECONOMIZER.
RT 13	2400	240	0.1"	1.5	480/60/3	14.0	804#	3/4"	110,000	70,400	65°F	104°F	6.2	80°F	62°F	CARRIER MODEL 48FCEA05A2M6-6B0G0 WITH FACTORY ROOF CURB AND ECONOMIZER.
RT 14	4000	400	0.1"	2.0	480/60/3	24.0	1244#	3/4"	224,000	141,200	65°F	104°F	10.0	80°F	62°F	CARRIER MODEL 48TCED12B2M6-6B0J0 WITH FACTORY ROOF CURB AND ECONOMIZER.

* ALL UNITS TO HAVE FACTORY INSTALLED ELEC. DISCONNECT AND GFCI CONVENIENCE OUTLET AND POKER EXHAUST. ALL UNITS TO MEET MINIMUM SEER RATING OF 14

ELECTRIC HEATER SCHEDULE						
SYM.	TYPE	BTU	KW	CHAR	CONTROL	REMARKS
EH 1 THRU 5	WALL MOUNTED	6930	2.0	120/60/1	INTEGRAL	QMARK MODEL HT150255 WALL HEATER WITH RECESSED BRACKET AND INTEGRAL T-STAT

EXHAUST FAN SCHEDULE								
SYM.	TYPE	C.F.M.	S.P.E.	H.P.	CHAR.	R.P.M.	CONTROL	REMARKS
EF 1	ROOF MOUNTED	1400	0.50	1/3	120/60/1	1330	24 HR. TIMELOCK	TWIN CITY MODEL 120G BCRD DOWNFLOW ROOFTOP EXHAUST FAN WITH FACTORY MOUNTED ROOF CURB
EF 2	ROOF MOUNTED KITCHEN HOOD	3000	1.75	2	480/60/3	1412	INTERLOCK W/ HOOD	ECON-AIR MODEL EADU180H WITH FACTORY HINGED ROOF CURB AND GREASE BOX AND DRAIN.
EF 3	CEILING MOUNTED	100	0.40	100 watts	120/60/1	750	WALL SWITCH SEE ELEC.	BROAN LOSONE SELECT MODEL L100 WITH BACKDRAFT DAMPER. 10x4 EXHAUST DUCT TO FLAT ROOF CAP
EF 4	CEILING MOUNTED	150	0.40	100 watts	120/60/1	750	WALL SWITCH SEE ELEC.	BROAN LOSONE SELECT MODEL L150 WITH BACKDRAFT DAMPER. 10x4 EXHAUST DUCT TO FLAT ROOF CAP

KITCHEN MAKE-UP AIR UNIT SCHEDULE													
SYM.	SUPPLY FAN				HEATING SECTION				REMARKS				
	CFM	SE	HP.	RPM	CHAR	BTU INPUT	BTU OUTPUT	EAT	LAT	GAS SUPPLY	WEIGHT		
MA 1	2540	50	1.0	1228	480/60/3	170,925	151,251	0°F	68°F	NAT	1" NPT	980 #	ECON-AIR EA2-D-250-20D. UNIT COMPLETE WITH FACTORY MOUNTED ROOF CURB AND MOTORIZED DAMPER. INTERLOCK WITH KH-1 HOOD CONTROL PANEL & EF-2 EXHAUST FAN.

KITCHEN HOOD SCHEDULE									
SYM.	LENGTH	WIDTH	HEIGHT	TYPE	EXH CFM	FAN SYM	MAKE-UP CFM	EXHAUST DUCT	WEIGHT
KH 1	15'-0"	92"	30"	TYPE I GREASE HOOD	3000	EF 2	2540	16"x14"	935 LBS

REMARKS:
ECON-AIR MODEL T830 EX-2-PSP-F. COMPLETE WITH ANSUL SYSTEM AND CONTROLS, GREASE CUP AND L55 SERIES LIGHTS. HOOD TO BE INSTALLED BY MECH. CONTRACTOR. MOUNT HOOD AT 80" A.F.F TO BOTTOM OF HOOD. MOUNT CONTROL PANEL ON WALL IN ACCESSIBLE LOCATION. FIELD VERIFY WITH OWNER FOR FINAL LOCATION.

GRILLE AND REGISTER SCHEDULE									
SYM.	TYPE	SIZE	CFM RANGE	THROW PATTERN	CONSTR.	FINISH	BALANCING DAMPER	FIRE DAMPER	REMARKS
D-1 CFM	CEILING	6x6	50-110	⬇	STEEL	WHITE	YES	NA	PRICE MODEL SMD WITH BEVELED FRAME
D-2 CFM	CEILING	4x4	110-280	⬇	STEEL	WHITE	YES	NA	PRICE MODEL SMD WITH BEVELED FRAME
D-3 CFM	CEILING	4x4	110-280	⬇	STEEL	WHITE	NA	NA	PRICE MODEL SMD IN 24x24 LAY-IN MODULE
D-4 CFM	CEILING	4x4	110-280	⬇	STEEL	WHITE	NA	NA	PRICE MODEL SMD IN 24x24 LAY-IN MODULE
SR-1 CFM	SIDEWALL REGISTER	12x10	300-450	NA	STEEL	WHITE	YES	NA	PRICE MODEL 520D WITH FLANGE FRAME
CS-1 CFM	CONCENTRIC SUPPLY/RETURN	48x48	6000	NA	STEEL	WHITE	YES	NA	RUSKIN MODEL 01-535-60 WITH DOUBLE DEFLECTION SUPPLY GRILLES
IR-1 CFM	CEILING	10x10	100-300	NA	STEEL	WHITE	NA	NA	PRICE MODEL 535
R-1	CEILING	10x10	100-300	NA	STEEL	WHITE	NA	NA	PRICE MODEL 535 IN 24x24 LAY-IN MODULE
R-2	CEILING	12x12	300-450	NA	STEEL	WHITE	NA	NA	PRICE MODEL 535 IN 24x24 LAY-IN MODULE
R-3	CEILING	20x20	700-1000	NA	STEEL	WHITE	NA	NA	PRICE MODEL 535 IN 24x24 LAY-IN MODULE
R-4	CEILING	24x48	4000	NA	STEEL	WHITE	NA	NA	PRICE MODEL 535 IN 24x48 LAY-IN MODULE
R-5	SIDEWALL	48x18	2700-2800	NA	STEEL	WHITE	NA	NA	PRICE MODEL 535
R-6	SIDEWALL	48x24	3000	NA	STEEL	WHITE	NA	NA	PRICE MODEL 535
R-7	DUCT MOUNTED	48x20	4000	NA	STEEL	WHITE	NA	NA	PRICE MODEL 82
R-8	SIDEWALL	12x12	300-450	NA	STEEL	WHITE	NA	YES	PRICE MODEL 535

SEAL

REV. DATE DESCRIPTION
12-13-19 BUILDING PERMIT SET

New Building For:
THE RUSH FUNFLEX
JORDAN LANDING
WEST JORDAN CITY, UTAH 84084

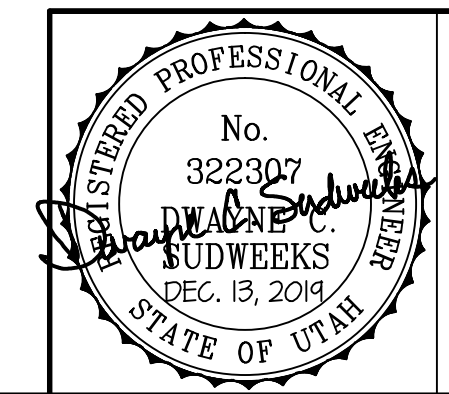
PROJECT:

SHEET TITLE:
MECHANICAL SCHEDULES & DETAILS

SHEET NUMBER:

M300

DO NOT SCALE DRAWING



Engineered Systems Associates
1355 EAST CENTER
POCATELLO, IDAHO 83201
PHONE: (208) 233-0501
FAX: (208) 233-0529
EMAIL: eso@engsystems.com
ESA JOB NUMBER: 19014